

A PREMIUM EVENT VENUE,
UNMATCHED

INTERSECT

BY LEXUS

DUBAI



YOU'RE BESPOKE
EVENT DESTINATION

INTERSECT

BY LEXUS

—
DUBAI

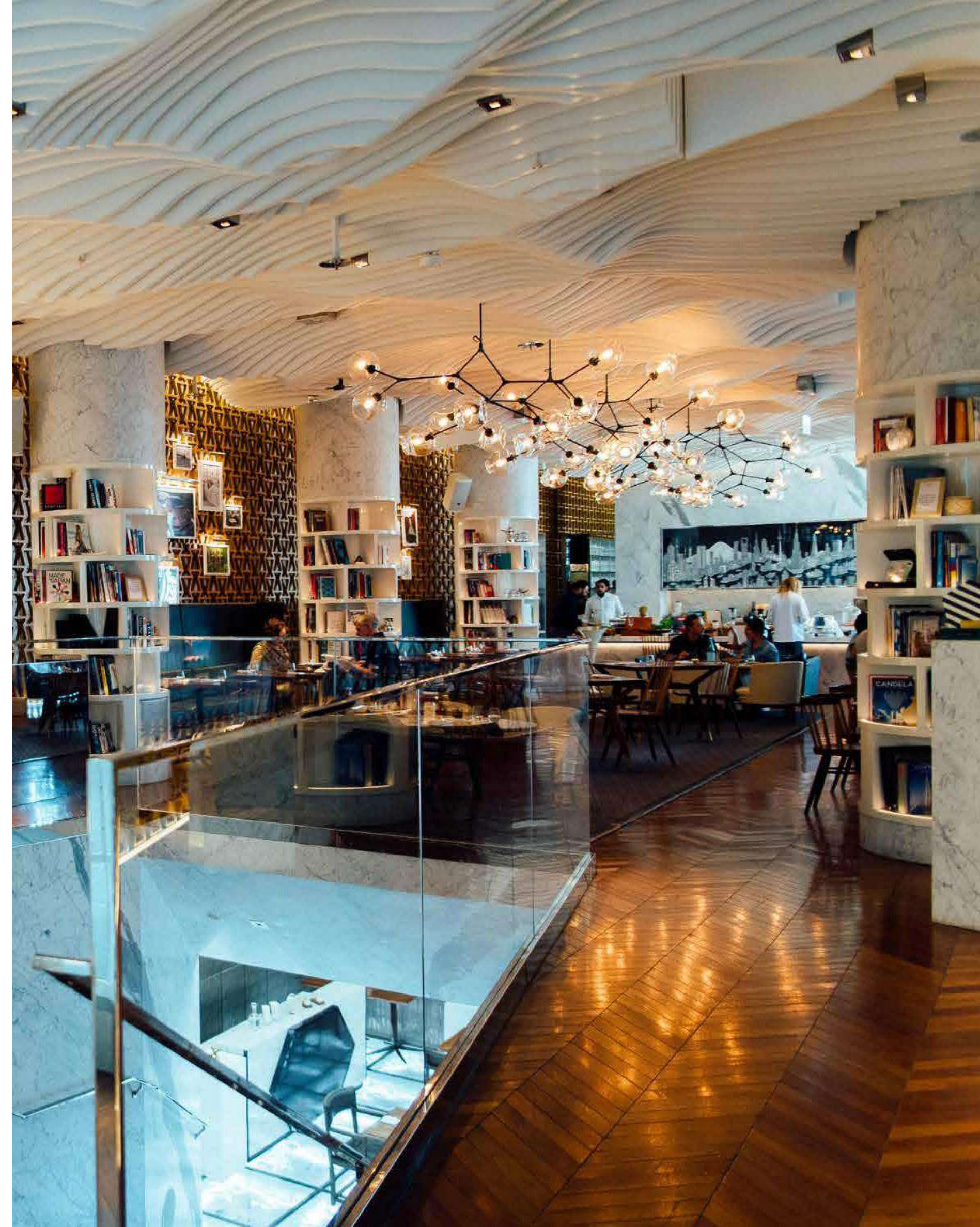


WELCOME TO INTERSECT BY LEXUS

A luxurious event destination, be fitting of all your needs.

Meticulously designed by world-renowned interior designer Masamichi Katayama, INTERSECT BY LEXUS - DUBAI creates the perfect environment for inspiration and collaboration. More than just a restaurant, it is a unique creative haven for people seeking enriched hospitality experiences.

With an innovative concept garage and exceptional creative kitchen, INTERSECT BY LEXUS - DUBAI offers a relaxed yet stimulating space for people seeking diverse luxury lifestyles enriched by design, fashion and technology.







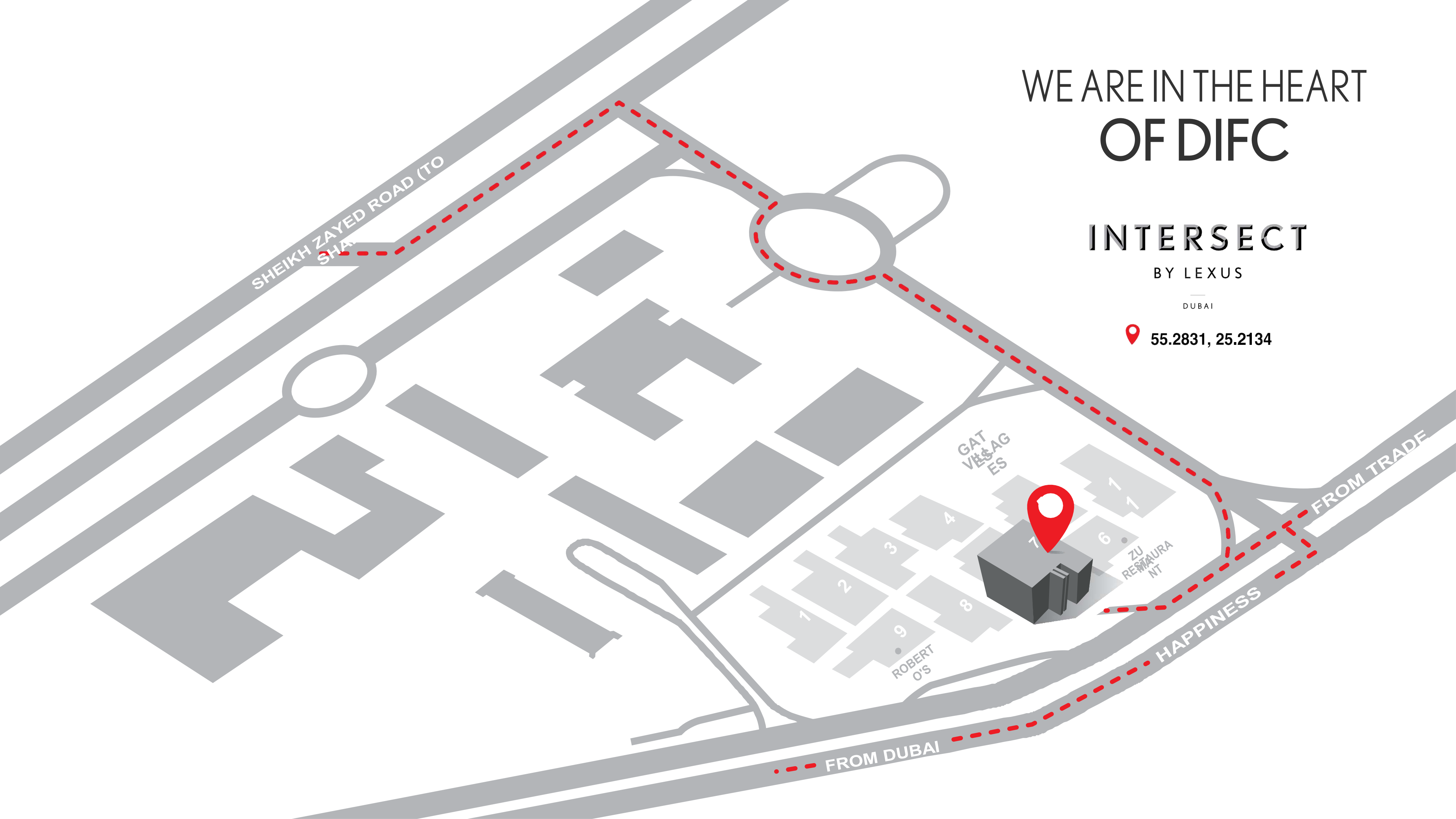
WE ARE IN THE HEART
OF DIFC

INTERSECT

BY LEXUS

DUBAI

 55.2831, 25.2134



SPECIFICATIONS
& SERVICES

Suitable events: Workshops, Panel Discussions, Private Lunch, Private Dinner, Product Launches, Meetings, Networking, Seminars, Cocktail Reception, Birthdays and Exhibitions

Space size: 1800 ft. (167 square meter)
Capacity: Restaurant (Upper floor)
Dining: 60
Largest Table: 24
Presentation 50
Cocktail Standing: 110

Complimentary AV Specifications and Equipment, Presentation Clicker, Microphones, Projector, Screen, Laptop and high speed WIFI. Supported formats are Movie (DAT, MPG, MPEG, VOB, AVI, DIVX, MP4, MKV, TS, TRP, TP, ASF, WMV, and FLV), Photo (JPEG) and Music (MP3)



CULINARY ARRANGEMENTS

BREAKFAST

AED150 per person

Mini Granola, Mixed Bakery, Signature Egg Benedict, Fresh fruit salad, Fresh Juices, Hot Beverages, Water Service

CANAPE ARRANGEMENTS

2 hours of serving

Vegetarian Delights, Fruits of the Sea, From the farm and Homemade Sweets

3pcs AED 75

6pcs AED 135

9pcs AED 190

SET MENU

3 Course Menu AED230 per person

3 Course Menu AED 285 per person (premium)

All prices are inclusive of 5% VAT and 7% Authority Fee



BEVERAGE ARRANGEMENTS

Non-alcoholic beverage arrangement per person AED 80

(water, soft drinks, fresh juices, coffee and tea)

House beverage arrangement per person/per hour AED 140

(Nonalcoholic drinks, house pours white wine, red wine and beer)

Standard House beverage arrangement per person/per hour AED 175

(Nonalcoholic drinks, house pours white wine, red wine, beer, gin, vodka, rum, whisky and tequila)

Premium House beverage arrangement per person/per hour AED 195

(Nonalcoholic drinks, house pours sparkling wine, white wine, red wine, rose wine beer, and premium spirits)

AED 240 per person (2 hours) – House Beverage Package

AED 275 per person (3 hours) – House Beverage Package

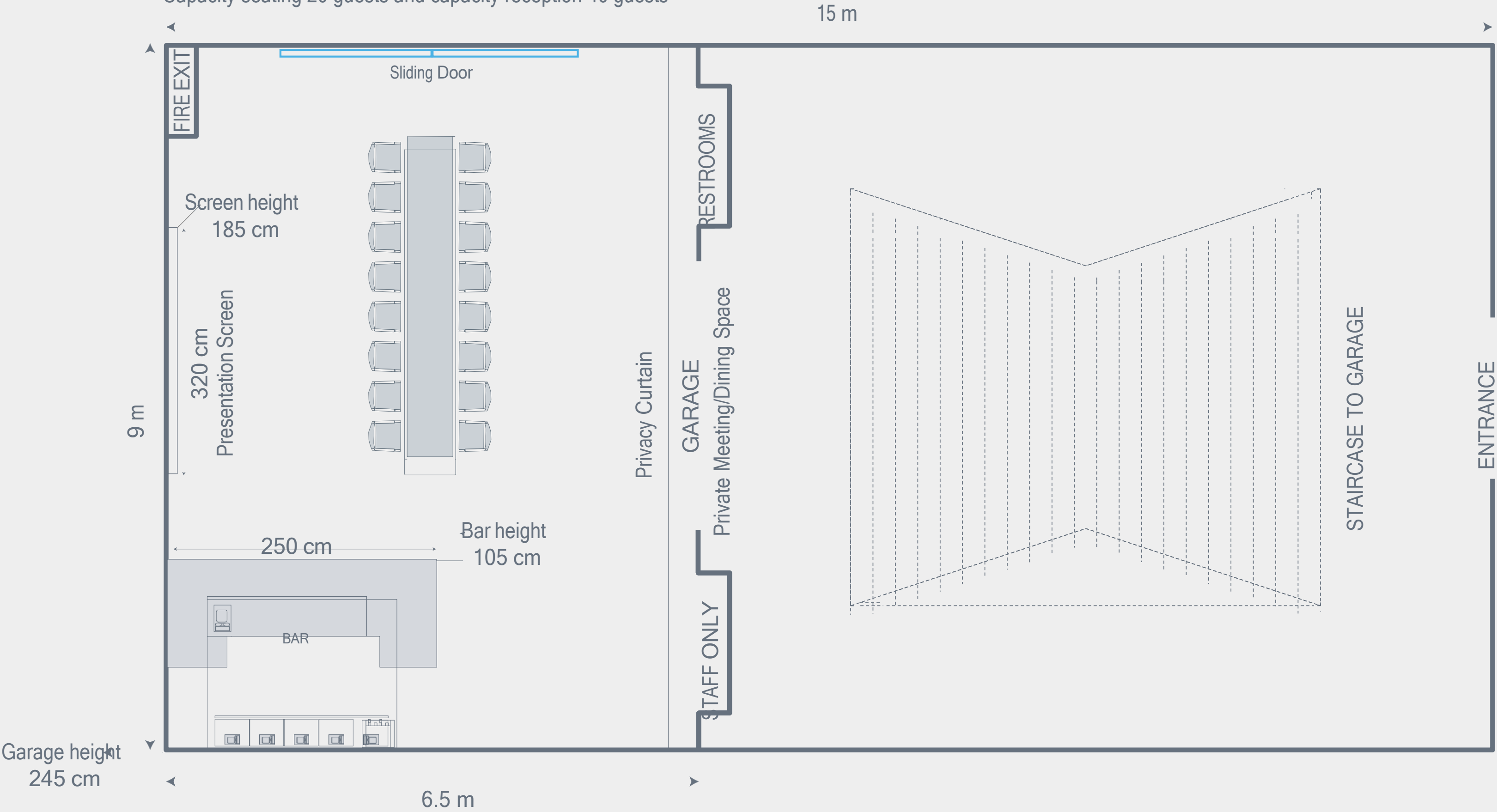
The Beverage Menu is available if you wish to order by serving of shot, glass or bottle as per consumption, a pre-order is required



FLOOR PLAN – Occupied by 2022 LEXUS NX 350 F Sport

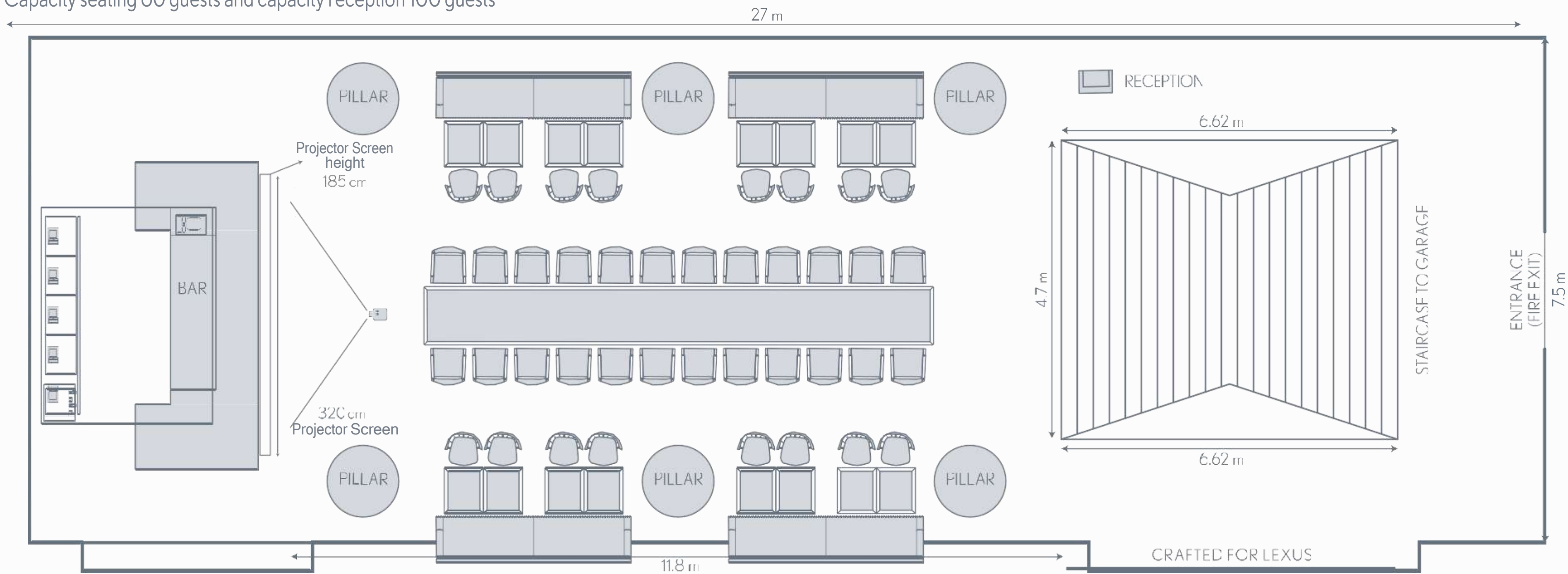
GARAGE (LOWER FLOOR)

Capacity seating 20 guests and capacity reception 40 guests



FLOOR PLAN (RESTAURANT UPPER FLOOR)

Capacity seating 60 guests and capacity reception 100 guests



6 days a week: Monday -Friday (8 AM - 10PM) &Saturday (1pm to 11pm) & Sunday (CLOSED), Complimentary Valet Parking is maximum 3 hours*. No overnight parking are allowed in the DIFC

Address: Gate Village 7, DIFC, Dubai
Contact number: +9714 355 9524
Email: reservations@intersectbylexus.ae
Website: www.intersectbylexus.ae

Deliveries of good brought into the DIFC will be checking by the security, oversized goods can only enter the DIFC via the loading deck, which requires 48hrs notice

